

Biological implications and limitations of a cynomolgus monkey with naturally occurring Parkinson's disease

Hao Li^{1,2}, Yong-Gang Yao^{1,2,3,*}, Xin-Tian Hu^{1,2,3,*}

¹ Key Laboratory of Animal Models and Human Disease Mechanisms of the Chinese Academy of Sciences and Yunnan Province, KIZ-CUHK Joint Laboratory of Bioresources and Molecular Research in Common Diseases, Kunming Institute of Zoology, Chinese Academy of Sciences, Kunming, Yunnan 650223, China

² National Resource Center for Non-Human Primates, and National Research Facility for Phenotypic & Genetic Analysis of Model Animals (Primate Facility), Kunming Institute of Zoology, Chinese Academy of Sciences, Kunming, Yunnan 650107, China

³ Center for Excellence in Brain Science and Intelligence Technology, Chinese Academy of Sciences, Shanghai 200031, China

We recently identified a cynomolgus monkey with naturally occurring Parkinson's disease (PD), indicating that PD may not be a uniquely human disease (Li et al, 2020). In our previous study, four lines of evidence, including typical PD clinical symptoms, pharmacological responses, pathological hallmarks, and genetic mutations, strongly supported the identification of a monkey with spontaneous PD (Figure 1). To the best of our knowledge, this is the first reported case of naturally developed PD in animals. This suggests that PD is not a disease restricted to humans, with its existence in a non-human primate providing a novel evolutionary angle for understanding PD. As a close relative to humans (Buffalo et al, 2019; Phillips et al, 2014; Yan et al, 2011), this rare case of PD in another primate species provides solid evidence that monkeys are ideal candidates for the development of a genuine "animal version of PD", with conserved etiology and pathogenesis (Li et al, 2020). Furthermore, it allows us to compare similarities and differences in PD development between species and to understand PD pathogenesis from an evolutionary point of view.

Many intriguing questions arise from our study (Li et al, 2020). The first is why only one spontaneous PD monkey was identified in the screening of more than 1 500 monkeys in our animal center. Does this mimic the incidence rate of PD in human populations? In our study, the identified PD monkey

was an adult male. The incidence of PD in the human male population is around 61.21 per 100 000 person-years (Hirsch et al, 2016). Assuming a similar incidence rate among our male monkeys, the probability of discovering a spontaneous PD case in our colony is around 0.06%. The male monkey population in our primate center stands at about 1 000, therefore the probability of discovering a monkey with spontaneous PD is: $1\ 000 \times 61.21 / 100\ 000 = 0.61$. Adjustment of the age factor is difficult as the monkeys screened in our study ranged from 7 to 30 years old, corresponding to an age range of 20 to 90 years in humans (Roth et al, 2004; Tigges et al, 1988). A 10-year-old monkey corresponds to a 30–40-year-old human (Roth et al, 2004; Tigges et al, 1988), and the incidence of PD in this age range in the human male population is as low as 3.59 per 100 000 person-years (Hirsch et al, 2016). Thus, the probability of discovering a 10-year-old PD case in our population is about 20 times lower than 0.61. Therefore, we were fortunate to find one PD case in our monkey colony. This rough estimation demonstrates that naturally occurring PD is likely a rare event in monkey colonies within an animal center, and estimation may be biased because of potential inbreeding within the colony. Thus, assessments based on our monkey colony may not

Received: 07 January 2021; Accepted: 08 February 2021; Online: 08 February 2021

Foundation items: This work was supported by the Key-Area Research and Development Program of Guangdong Province (2019B030335001), National Key R&D Program of China (2018YFA0801403), and Strategic Priority Research Program of the Chinese Academy of Sciences (XDB32060200 and XDB32020200)

*Corresponding authors, E-mail: yaoyg@mail.kiz.ac.cn; xthu@mail.kiz.ac.cn

DOI: 10.24272/j.issn.2095-8137.2021.004

Open Access

This is an open-access article distributed under the terms of the Creative Commons Attribution Non-Commercial License (<http://creativecommons.org/licenses/by-nc/4.0/>), which permits unrestricted non-commercial use, distribution, and reproduction in any medium, provided the original work is properly cited.

Copyright ©2021 Editorial Office of Zoological Research, Kunming Institute of Zoology, Chinese Academy of Sciences

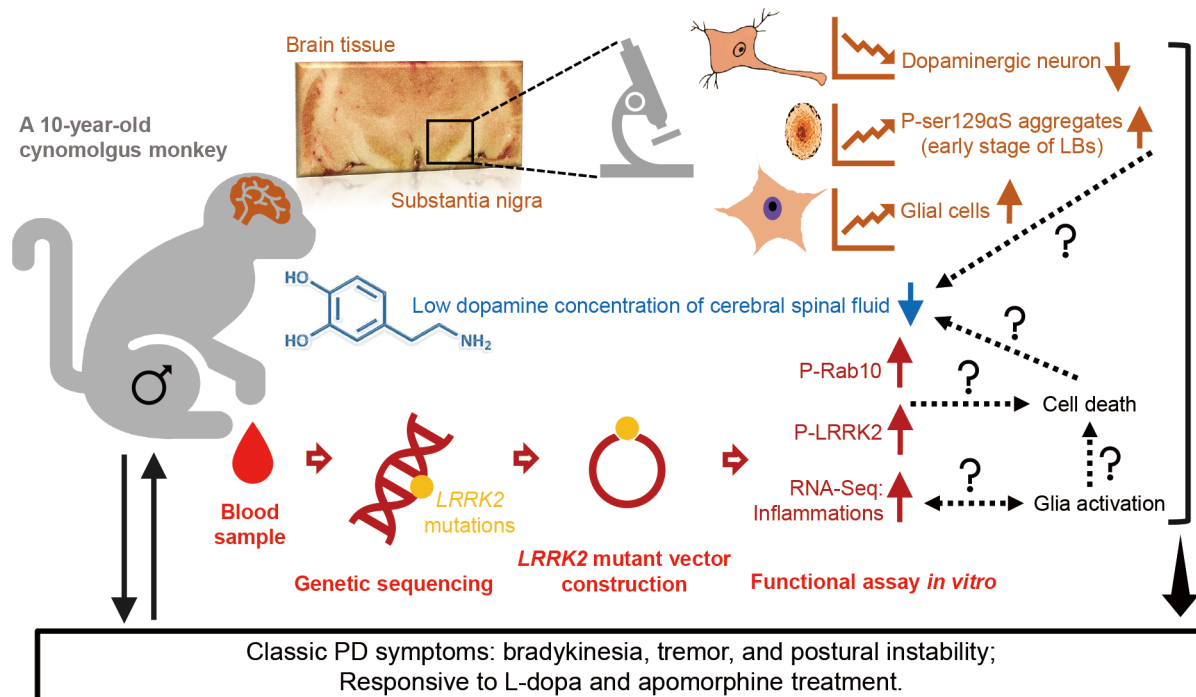


Figure 1 Spontaneous PD monkey displayed typical Parkinsonian symptoms and pathological hallmarks
Potential pathogenetic mechanisms are illustrated.

accurately reflect the incidence rate of PD in a realistic breeding scenario across wild monkey populations. Moreover, due to greater survival challenges and the fact that PD is a motor deficit disease, we speculate that inflicted animals in the wild may not reach an adequate age to display PD phenotypes. Nonetheless, the occurrence of this disease suggests the possibility that PD-like behaviors may appear in natural wild populations and should be monitored during field observations.

The second question to arise is to what extent the identified monkey PD mimics human PD. Human PD has several clinical types, but key phenotypes usually include motor symptoms such as bradykinesia, resting tremor, postural instability, and rigidity, and classic pathological changes such as severe nigral dopaminergic neuronal loss and Lewy pathology (Poewe et al, 2017). The spontaneous PD monkey showed classic clinical symptoms, similar responses to levodopa and apomorphine treatments as PD patients, and all typical PD pathological hallmarks (Li et al, 2020). In other words, the monkey PD mimicked nearly all important phenotypes of human PD. However, our previous study (Li et al, 2020) has several limitations in regard to the characterization of pathogenesis in the spontaneous PD monkey. Firstly, due to the monkey's sudden death, we were unable to collect fresh tissue samples for biochemical analyses to obtain direct evidence for the functional consequences of the LRRK2 mutations p.I835L, p.N1506Y, and p.E2381G. Secondly, the *in vitro* cell culture data only provided indirect evidence for the possible pathogenicity of the LRRK2 mutations causing the

PD phenotypes in the monkey. We found that the levels of serine 1292-phosphorylated LRRK2 (p-Ser1292 LRRK2) and threonine 73-phosphorylated Rab10 (p-Thr73 Rab10) were increased, which may have triggered PD pathogenesis, as seen in previous studies in humans (Fan et al, 2018; Zimprich et al, 2004). Moreover, the RNA-sequencing data indicated that immunological reactions and inflammation may also have contributed to the PD pathogenesis in this monkey, consistent with the glial cell activation observed in pathological staining (Li et al, 2020). To demonstrate a causal relationship between the LRRK2 mutations and PD phenotypes, *in vivo* data from transgenic monkeys bearing these mutations are required. This could be accomplished in monkeys using recently popularized gene-editing techniques (Chen et al, 2017; Luo et al, 2016; Niu et al, 2014; Zhao et al, 2019).

The third question to arise is how our understanding of this spontaneous model will help in the future construction of genetically modified PD monkeys. As the naturally occurring PD monkey identified in our study exhibited a sensitive response to classic PD treatment drugs, e.g., levodopa and apomorphine (Li et al, 2020), we predict that genetically modified monkeys with LRRK2 mutations may be feasible models. Furthermore, models with LRRK2 as the target could be used for screening and verifying novel drugs in PD preclinical studies in the future.

In summary, we identified a rare PD monkey case in captivity (Li et al, 2020), which suggests that PD is not a uniquely human disease and LRRK2 may be a promising target for creating genetically modified PD monkeys.

COMPETING INTERESTS

The authors declare that they have no competing interests.

AUTHORS' CONTRIBUTIONS

H.L., Y.G.Y., and X.T.H. conceived and prepared the draft. All authors read and approved the final version of the manuscript.

REFERENCES

- Buffalo EA, Movshon JA, Wurtz RH. 2019. From basic brain research to treating human brain disorders. *Proceedings of the National Academy of Sciences of the United States of America*, **116**(52): 26167–26172.
- Chen YC, Yu JH, Niu YY, Qin DD, Liu HL, Li G, et al. 2017. Modeling rett syndrome using TALEN-Edited *MECP2* mutant cynomolgus monkeys. *Cell*, **169**(5): 945–955.e10.
- Fan Y, Howden AJM, Sarhan AR, Lis P, Ito G, Martinez TN, et al. 2018. Interrogating Parkinson's disease LRRK2 kinase pathway activity by assessing Rab10 phosphorylation in human neutrophils. *Biochemistry Journal*, **475**(1): 23–44.
- Hirsch L, Jette N, Frolkis A, Steeves T, Pringsheim T. 2016. The incidence of Parkinson's disease: a systematic review and meta-analysis. *Neuroepidemiology*, **46**(4): 292–300.
- Li H, Su LY, Yang LX, Li M, Liu QJ, Li ZH, et al. 2020. A cynomolgus monkey with naturally occurring Parkinson's disease. *National Science Review*: nwaa292, doi: 10.1093/nsr/nwaa292.
- Luo X, Li M, Su B. 2016. Application of the genome editing tool CRISPR/Cas9 in non-human primates. *Zoological Research*, **37**(4): 214–219.
- Niu YY, Shen B, Cui YQ, Chen YC, Wang JY, Wang L, et al. 2014. Generation of gene-modified cynomolgus monkey via Cas9/RNA-mediated gene targeting in one-cell embryos. *Cell*, **156**(4): 836–843.
- Phillips KA, Bales KL, Capitanio JP, Conley A, Czoty PW, 't Hart BA, et al. 2014. Why primate models matter. *American Journal of Primatology*, **76**(9): 801–827.
- Poewe W, Seppi K, Tanner CM, Halliday GM, Brundin P, Volkman J, et al. 2017. Parkinson disease. *Nature Reviews Disease Primers*, **3**: 17013.
- Roth GS, Mattison JA, Ottinger MA, Chachich ME, Lane MA, Ingram DK. 2004. Aging in rhesus monkeys: relevance to human health interventions. *Science*, **305**(5689): 1423–1426.
- Tigges J, Gordon TP, McClure HM, Hall EC, Peters A. 1988. Survival rate and life span of rhesus monkeys at the Yerkes regional primate research center. *American Journal of Primatology*, **15**(3): 263–273.
- Yan GM, Zhang GJ, Fang XD, Zhang YF, Li C, Ling F, et al. 2011. Genome sequencing and comparison of two nonhuman primate animal models, the cynomolgus and Chinese rhesus macaques. *Nature Biotechnology*, **29**(11): 1019–1023.
- Zhao JG, Lai LX, Ji WZ, Zhou Q. 2019. Genome editing in large animals: current status and future prospects. *National Science Review*, **6**(3): 402–420.
- Zimprich A, Biskup S, Leitner P, Lichtner P, Farrer M, Lincoln S, et al. 2004. Mutations in *LRRK2* cause autosomal-dominant parkinsonism with pleomorphic pathology. *Neuron*, **44**(4): 601–607.